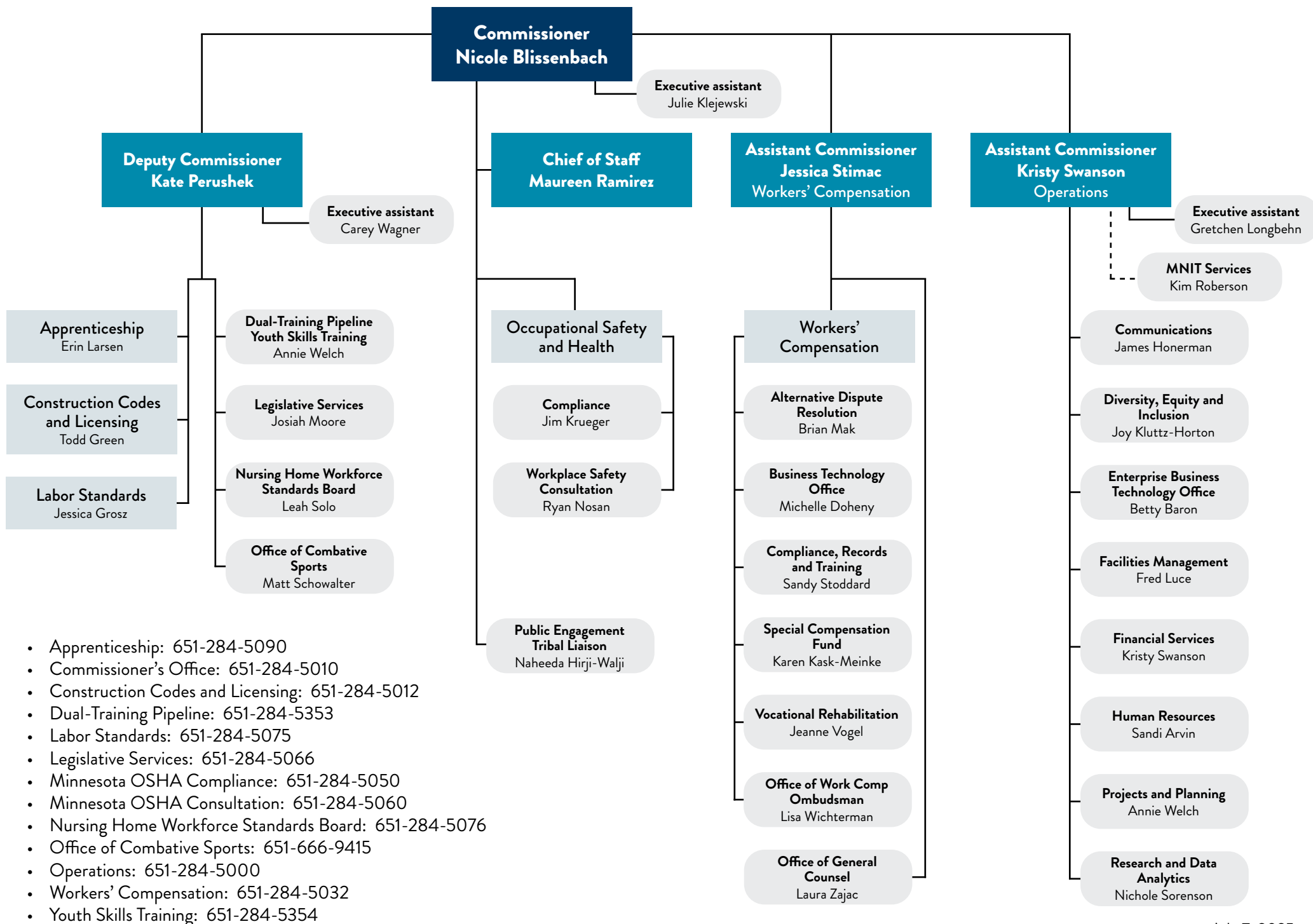


# Minnesota Department of Labor and Industry organizational chart



- Apprenticeship: 651-284-5090
- Commissioner's Office: 651-284-5010
- Construction Codes and Licensing: 651-284-5012
- Dual-Training Pipeline: 651-284-5353
- Labor Standards: 651-284-5075
- Legislative Services: 651-284-5066
- Minnesota OSHA Compliance: 651-284-5050
- Minnesota OSHA Consultation: 651-284-5060
- Nursing Home Workforce Standards Board: 651-284-5076
- Office of Combative Sports: 651-666-9415
- Operations: 651-284-5000
- Workers' Compensation: 651-284-5032
- Youth Skills Training: 651-284-5354