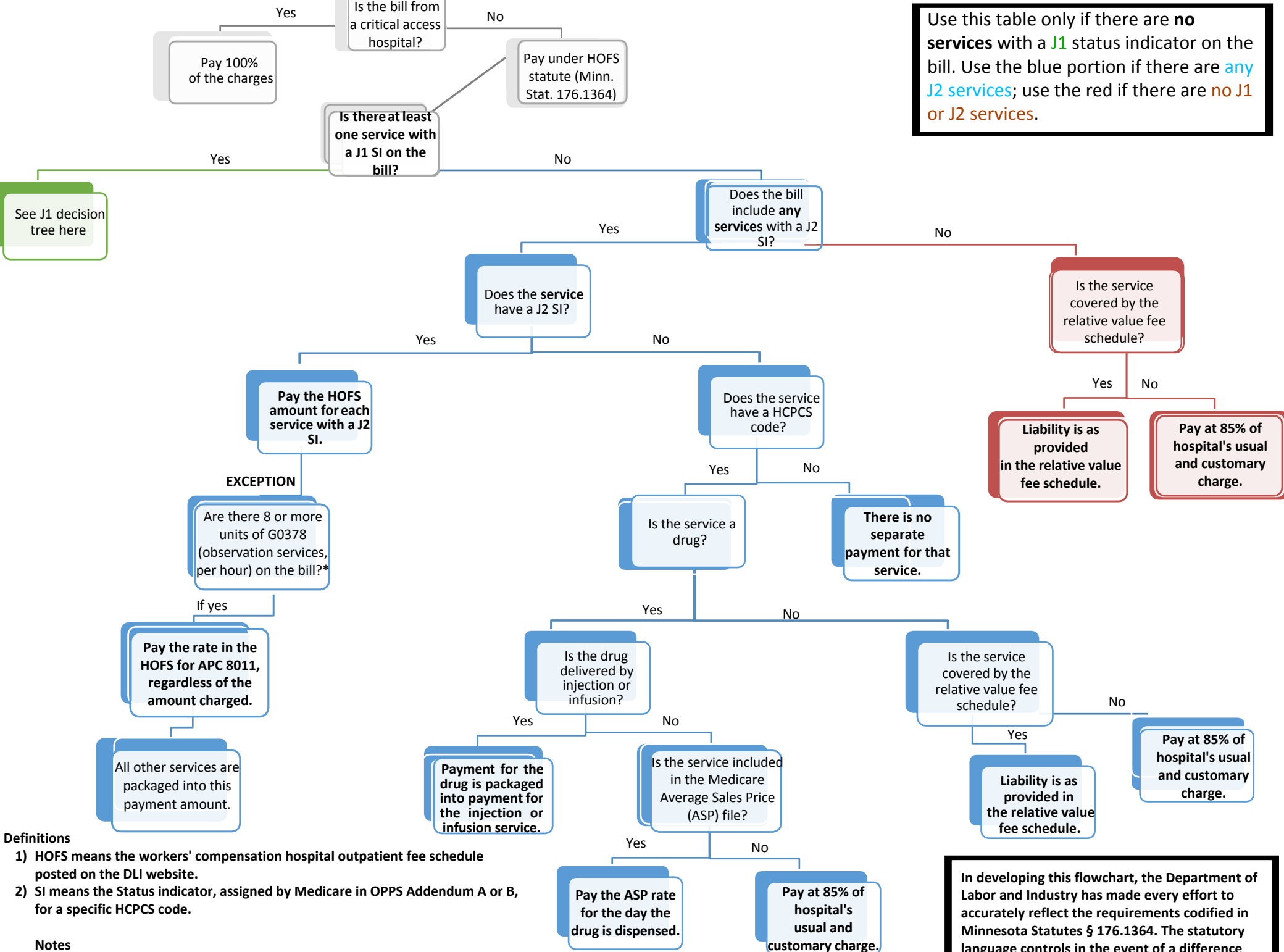


Use this table only if there are **no services** with a **J1** status indicator on the bill. Use the blue portion if there are **any J2 services**; use the red if there are **no J1 or J2 services**.



Definitions

- 1) HOFS means the workers' compensation hospital outpatient fee schedule posted on the DLI website.
- 2) SI means the Status indicator, assigned by Medicare in OPPS Addendum A or B, for a specific HCPCS code.

Notes

*In order for the observation APC to apply, there must be a physician or dentist's order for observation with the bill.

In developing this flowchart, the Department of Labor and Industry has made every effort to accurately reflect the requirements codified in Minnesota Statutes § 176.1364. The statutory language controls in the event of a difference between these instructions and the statute.